



ANN DEMEULEMEESTER



BARBARA BUI



PUCCI



LANVIN

The '70s Are Back

BY JULIE GALLEGO

In Black

...HEAD-TO-TOE, OR WITH NEUTRALS, WHITE, AND LEATHER

See Page 58 for local shopping information. →



TORY BURCH



REBECCA MINKOFF

BOTTEGA VENETA

VALENTINO GARAVANI

CHLOÉ

In Pants

...SLIM, FLARED, AND GAUCHO

See Page 58 for local shopping information. →

In Prints

...FOLKY, FLORAL, AND FABULOUS



REBECCA MINKOFF



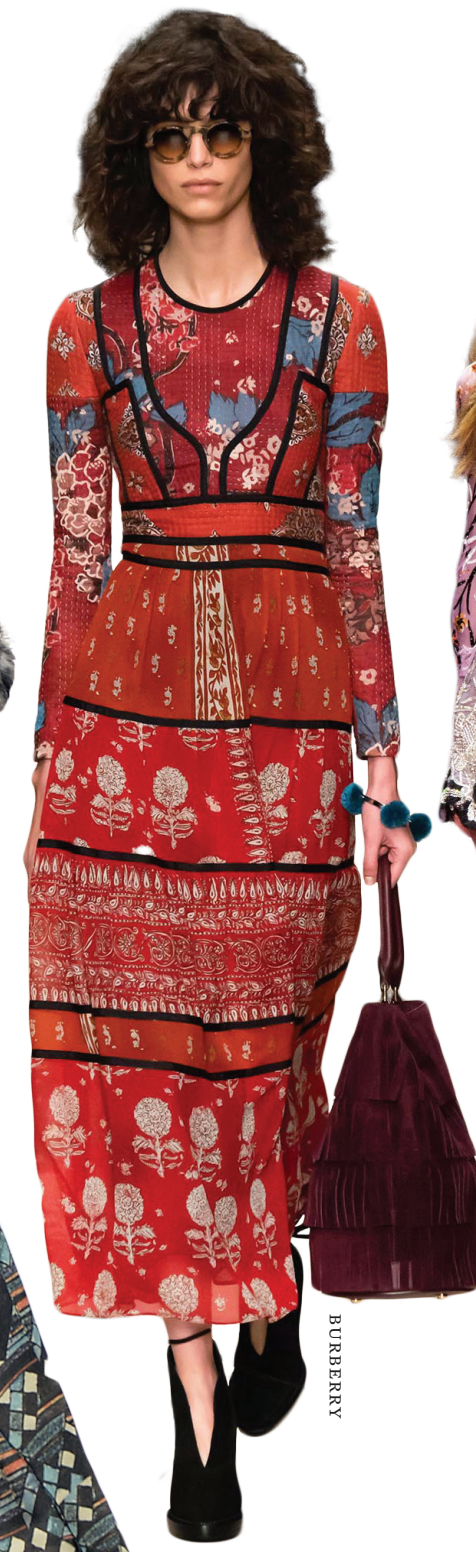
TORY BURCH



TORY BURCH



LANVIN



BURBERRY



VERSACE

Turn page for local shopping information. →





GALA OF HOPE

CURE SPINAL MUSCULAR ATROPHY

OCTOBER 10, 2015

Ritz-Carlton Laguna Niguel

One Ritz-Carlton Drive
Dana Point, CA 92629

-  Dinner & Cocktails
-  Entertainment
-  Live & Silent Auctions
-  California Icons
-  Proceeds fund research for a cure

Join us in curing SMA, the #1 genetic cause of death in children under two.



TO REGISTER OR DONATE VISIT:
events.curesma.org/2015galaofhope

FROM PAGES 52-57



IN BLACK (Pages 52 and 53)

ANN DEMEULEMEESTER Blazer, \$1,560; wide-legged trousers, \$725; leather zip belt, \$675; leather gloves, \$525, Saks Fifth Avenue, South Coast Plaza, 714-540-3233, saksfifthavenue.com

BARBARA BUI Patchwork cape in black/navy wool and cashmere, and black leather and brown pony skin, \$5,610; zipped top, \$940; jersey leggings with leather inserts, \$620; silver-tipped rockabilly boots, \$560, South Coast Plaza, 714-641-3770, barbarabui.com

PUCCI Silk velvet shorts, \$1,515; long-sleeved shirt, \$1,765; leather fringed shawl, price on request, emiliopucci.com

LANVIN Asymmetrical hat with tassel, \$890; velvet manteau, \$5,215; skirt, \$2,635; long necklace, \$1,750; short necklace, \$2,190, South Coast Plaza, 714-706-3240, lanvin.com

IN PANTS (Pages 54 and 55)

TORY BURCH Essaouira-pattern wool jacquard vest, \$995; stretch silk blouse, \$295; silk-wool pant, \$295, South Coast Plaza, 714-689-0450, toryburch.com

REBECCA MINKOFF Vali pant, \$698; jacket, \$348; Finn cross-body bag, \$125, Nordstrom, South Coast Plaza, 714-549-8300, rebeccaminkoff.com

BOTTEGA VENETA Black-and-white pois silk crepe shirt, \$1,250; pois wool pants, \$1,250; patent-leather belt, \$610; Nero nappa stretch boot, \$1,790, South Coast Plaza, 714-540-9760, bottegaveneta.com/us

VALENTINO GARAVANI Georgette blouse, \$2,690; gaucho pants, \$1,590, South Coast Plaza, 714-751-3300, valentino.com/us

CHLOÉ Wool houndstooth pants, \$1,295; double-breasted blazer, \$3,495, South Coast Plaza, 714-481-0308, chloe.com

IN PRINT (Pages 56 and 57)

REBECCA MINKOFF Reversible Warhol cape, \$498; Soldier skirt, \$248; Inez boots, \$425, Nordstrom, South Coast Plaza, 714-549-8300, rebeccaminkoff.com

TORY BURCH Embellished jacquard wrap skirt, \$495; pleated silk shirt, \$325; stovepipe boots, \$750, South Coast Plaza, 714-689-0450, toryburch.com

TORY BURCH Jacquard top, \$495; merino grommet skirt, \$495, South Coast Plaza, 714-689-0450, toryburch.com

LANVIN Coat, \$49,985; dress, \$6,500; twist necklace, \$885; tassel necklace, \$990; bracelet, \$370; boots, \$1,690, South Coast Plaza, 714-706-3240, lanvin.com

BURBERRY Print silk dress made to order, price on request; similar ready-to-wear dress, \$2,795, South Coast Plaza, 714-556-8110, burberry.com

ATELIER VERSACE Double-layered mini-silk velvet fil coupé over a tulle slip dress—with metallic silver thread and tiny Swarovski crystals. By special order, atelier@versace.it